

For Lease

8230 Belvedere Avenue, Suite A

Sacramento, CA



±8,000 Rentable Square Feet Available



- ◆ 8230 Belvedere:
Suite A - ±8,000 SF with ±1,000 SF Office
- ◆ End Cap Space Fronting Belvedere Avenue
- ◆ Existing Office
- ◆ 16' Minimum Clear Height
- ◆ Grade Level Doors
- ◆ Common Area Loading Dock
- ◆ Insulated Warehouse Ceiling
- ◆ Concrete Tilt-Up Construction
- ◆ Skylights
- ◆ M-1 Zoning
- ◆ Sprinklers
- ◆ Excellent Access to Highway 50



Mike Smith 916.569.2352 msmith@ngkf.com CA RE License #01504428

Tyler Howell 916.569.2366 tyler.howell@ngkf.com CA RE License #02100245

980 9th Street, Suite 2500, Sacramento, CA 95814

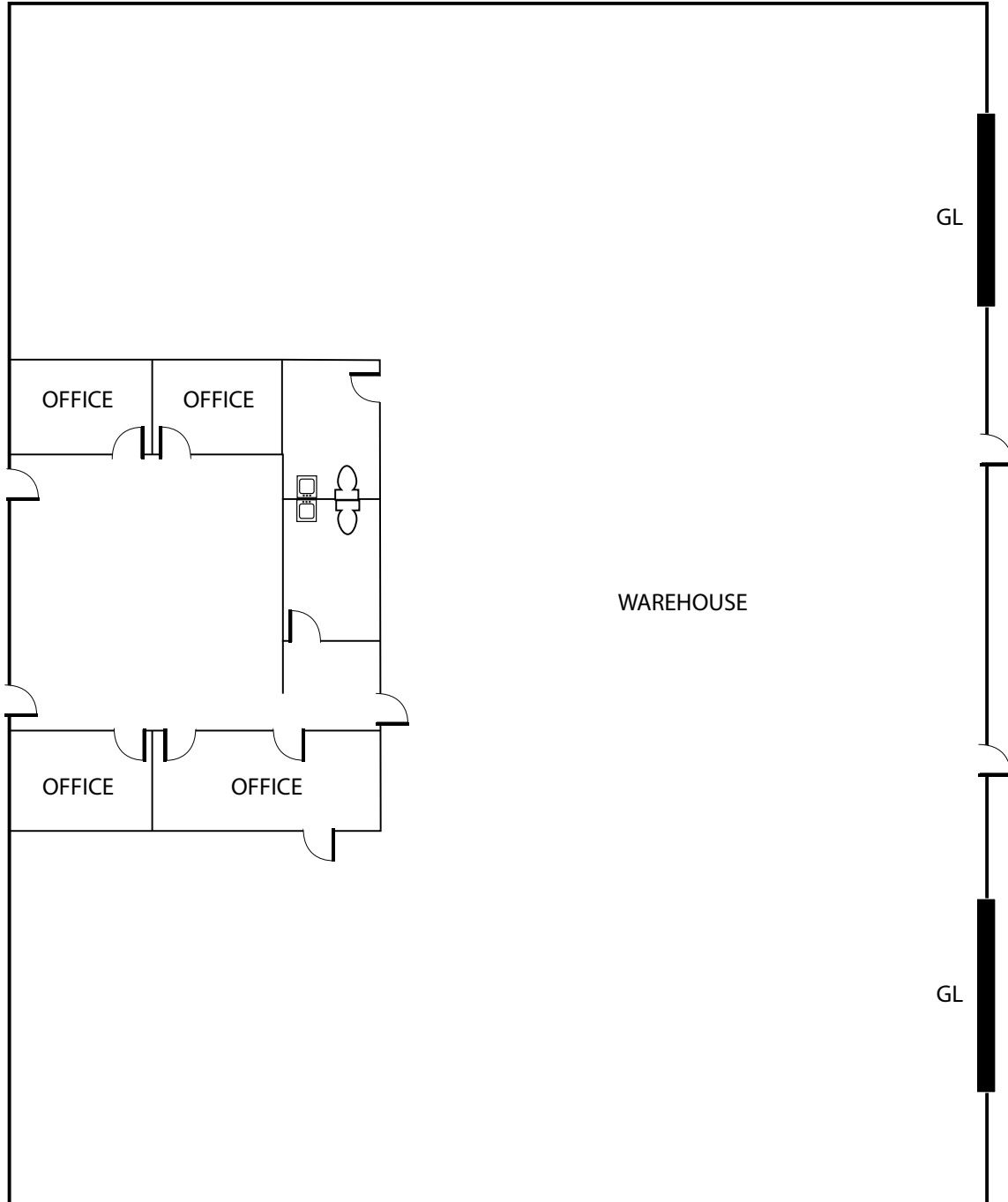
www.ngkf.com

For Lease

8230 Belvedere Avenue, Suite A

Sacramento, CA

FLOORPLAN - 8230 Belvedere, Suite A



Mike Smith 916.569.2352 msmith@ngkf.com CA RE License #01504428
Tyler Howell 916.569.2366 tyler.howell@ngkf.com CA RE License #02100245

980 9th Street, Suite 2500, Sacramento, CA 95814

www.ngkf.com

The distributor of this communication is performing acts for which a real estate license is required. The information contained herein has been obtained from sources deemed reliable but has not been verified and no guarantee, warranty or representation, either express or implied, is made with respect to such information. Terms of sale or lease and availability are subject to change or withdrawal without notice.

For Lease

8230 Belvedere Avenue, Suite A

Sacramento, CA

PHOTOS - 8230 Belvedere, Suite A



Mike Smith 916.569.2352 msmith@ngkf.com CA RE License #01504428

Tyler Howell 916.569.2366 tyler.howell@ngkf.com CA RE License #02100245

980 9th Street, Suite 2500, Sacramento, CA 95814

www.ngkf.com

The distributor of this communication is performing acts for which a real estate license is required. The information contained herein has been obtained from sources deemed reliable but has not been verified and no guarantee, warranty or representation, either express or implied, is made with respect to such information. Terms of sale or lease and availability are subject to change or withdrawal without notice.

20-0208 • 07/20