

7th annual gone FISHIN' DERBY

Benefiting the Police Activities League (PAL)

Saturday • August 7, 2010
8:00 a.m. to 1:00 p.m.

granite regional park

SEE REVERSE FOR LOCATION AND DIRECTIONS,
RULES & SCHEDULE



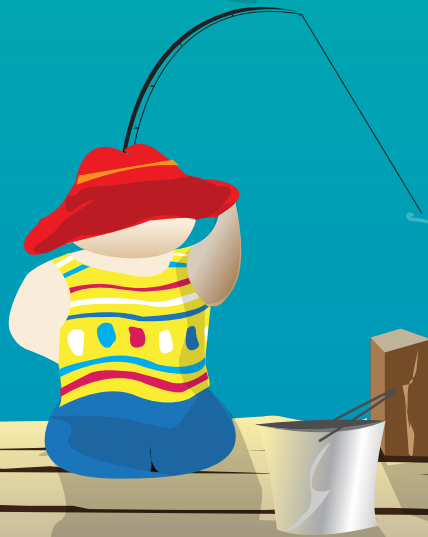
Special thanks to the following sponsors:



BLT Enterprises



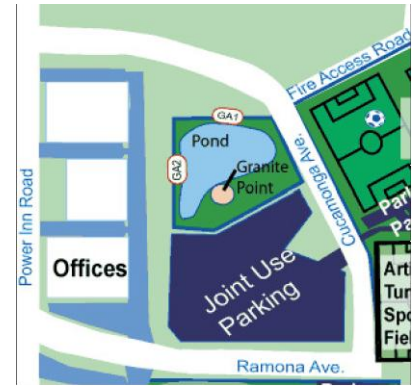
Granite Park Partners



For More Information or to Register for the Event
Visit WWW.GONEFISHINDERBY.ORG or Call Tom Burruss at 916.392.0154

Directions to Granite Regional Park

Located on Ramona Avenue off Power Inn Road. Take the Power Inn/Howe south exit off of Highway 50, and turn left at Ramona Avenue. Turn left at Cucamonga Avenue. Parking lot is on the left (no cost to park on weekends). Fishing Derby will be held at Granite Point. Look for the white canopies.



Fishing Derby Rules

These rules are created for your protection. Adherence to Derby rules is expected at all times.

- Any person under 16 years of age is not required to have a California fishing license.
- Any person aged 16 years or older who wish to fish **must** have a valid California fishing license and must prominently display their by attaching it to their outer clothing at or above the waistline so that it is plainly visible.
- Fishing Derby participants must be registered prior to beginning fishing and to qualify for contest prizes.
- All fish must be hooked in the mouth to be considered legally caught. Any fish hooked other than in the mouth must be immediately released.
- This is a family-friendly event. Please keep any children not participating in the derby out of the fishing area, be considerate of fellow anglers when fishing, or when walking through the fishing area.
- All children must be accompanied by a parent/guardian at all times, especially when near the water.
- Bring your own outdoor comfort items such as: blankets, umbrellas, chairs, etc. and any personal fishing tackle and bait (worms provided to registered participants). Fishing poles may be loaned from the Department of Fish and Game booth on Derby Day.
- All trash must be placed in the proper cans stationed around the park. Recycle bins are also provided for plastic bottles. Do not put food or trash in the recycle bins.

ABSOLUTELY NO DRUGS OR ALCOHOL PERMITTED ON THE GROUNDS OF GRANITE REGIONAL PARK.

Fishing Derby Schedule

- 8:00 a.m. Registration**
- 8:30 a.m. Safety Training and Fishing Lesson**
- 9:00 a.m. Raffle and Derby Start**
- 10:00 a.m. Raffle**
- 10:30 a.m. Food Service**
- 11:00 a.m. Raffle**
- 11:30 a.m. Derby Ends**
- 11:45 a.m. Contest Awards and Final Raffle**
- 12 Noon Clean Up**

**Please leave Granite Regional Park the way you found it...
clean and green!**

For more information, call 392-0154